



-Observe seasonal change, collecting signs of Autumn  
-talk about things in my school and near my school  
-spot living things in my habitat and discuss them

--Observe seasonal change  
--Use maps and aerial photographs to talk about what is near my school and home  
-talk about buildings in my school and near my school

-Observe seasonal change  
--Use visual maps and aerial photographs to locate items  
-notice differences between a town and farm

-Observe features of the school grounds and discuss them  
-Use a map and simple directional language to find places on my school grounds

-Observe human features changing through time  
-Record and note these changes with tally charts  
-Use maps and directional language North, East, South and West

-measure and record the temperature over a longer time period  
-measure rainfall and record results over a period of time  
-show my results in a simple pictogram

--Use maps and directional language North, East, South and West  
--use physical features and symbols to locate places on my school grounds with maps

--Use maps and directional language North, East, South and West  
-relate maps using north e.g. artic (North pole)  
-observe details from maps

# EYFS

Who am I and where am I in the world?

Where do I live and how is it different to the seaside?

P.E. Team Building and Treasure Hunts- Map Skills and spatial awareness

# KS1

Where is my school and what is it's place in the community?  
**Human and physical geography**

How has my local area changed through time?  
**Land use change**

What has the weather got to do with climate change?  
**Measure rainfall**

P.E. Team Building, map skills and spatial awareness

What is the scale of the world I am in? (Yr2) Continents and Oceans

## Geography Map Skills and Fieldwork Roadmap and Progression

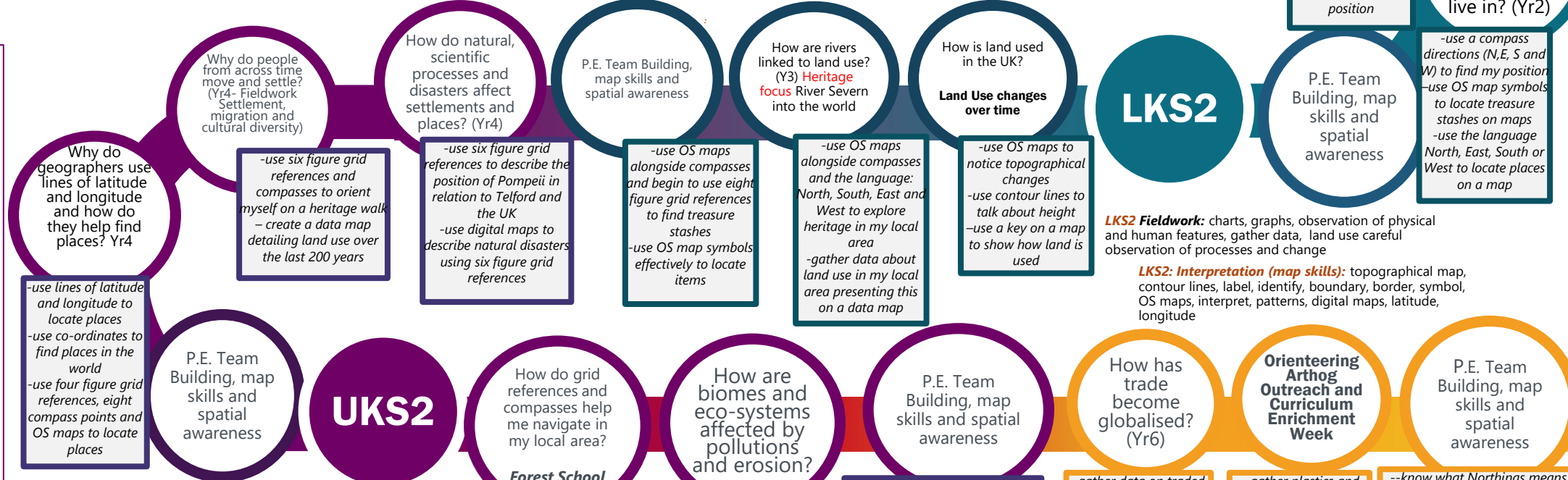
- **Enrichment through wider curriculum see other subject areas linked on the roadmap**
  - **Fieldwork (map skills) These skills and the knowledge is progressive and details are outlined in the MTPs**
  - **Interpretation (map skills)**
  - **Map skills and fieldwork is built into the geography and enriched and applied through Forest school and dedicated P.E. units of work**
- In each key stage these skills are repeated and layered to ensure key knowledge- both substantive and procedural is embedded for pupils**

**EYFS Fieldwork-** weather, observation, describe changes in weather, seasons, maps, aerial photographs, pictures

**EYFS Interpretation (map skills):** aerial photographs, map(s) find, locate, near, left, right, above, below, close

**KS1 Fieldwork:** rainfall, climate, collection, physical and human geography, land use, tally, graph and bar chart, observation, physical and human geography

**KS1 Interpretation (map skills):** symbols, maps, north, east south, west, compass points, orient, navigate, locate, routes, near, far, left and right, sketch, plan, route



-use lines of latitude and longitude to locate places  
-use co-ordinates to find places in the world  
-use four figure grid references, eight compass points and OS maps to locate places

-use six figure grid references and compasses to orient myself on a heritage walk  
- create a data map detailing land use over the last 200 years

-use six figure grid references to describe the position of Pompeii in relation to Telford and the UK  
-use digital maps to describe natural disasters using six figure grid references

-use OS maps alongside compasses and begin to use eight figure grid references to find treasure stashes  
-use OS map symbols effectively to locate items

-use OS maps alongside compasses and the language: North, South, East and West to explore heritage in my local area  
-gather data about land use in my local area presenting this on a data map

-use OS maps to notice topographical changes  
-use contour lines to talk about height  
-use a key on a map to show how land is used

**LKS2 Fieldwork:** charts, graphs, observation of physical and human features, gather data, land use careful observation of processes and change

**LKS2: Interpretation (map skills):** topographical map, contour lines, label, identify, boundary, border, symbol, OS maps, interpret, patterns, digital maps, latitude, longitude

**UKS2 Fieldwork:** case study, charts, present, action, change, challenge, evidence, environmental science

--know what Northings means and Eastings means  
-begin to use six figure grid references, eight compass points and OS maps to locate places  
-find landmarks using six figure grid references

-collect plastics and waste from the local area  
-record data to show waste collected from the environment  
-present a case for reducing plastic waste using charts and images

--know what Northings means and Eastings means  
-begin to use six figure grid references, eight compass points and OS maps with more confidence to locate places  
-move quickly, locating places and using maps while moving

-gather data on traded commodities  
-present data on trade commodities using bar charts drawn accurately  
-examine patterns in trade goods, including fair trade

--gather plastics and explain the purpose for conservation  
-move quickly and efficiently locating places and using maps while moving

--know what Northings means and Eastings means  
-use six figure grid references, eight compass points and OS maps with more confidence to locate places  
-move quickly and efficiently locating places and using maps while moving

**UKS2 Interpretation (map skills):** grid reference, four figure grid reference, six figure grid reference, northings, eastings, scale, key, contour lines, symbols, compass directions eight compass points: north, north-east, north-west, south, south-east, south-west, west and east x and y axis, symbols, OS maps, ordinance survey, locate, find, navigate, orienteering